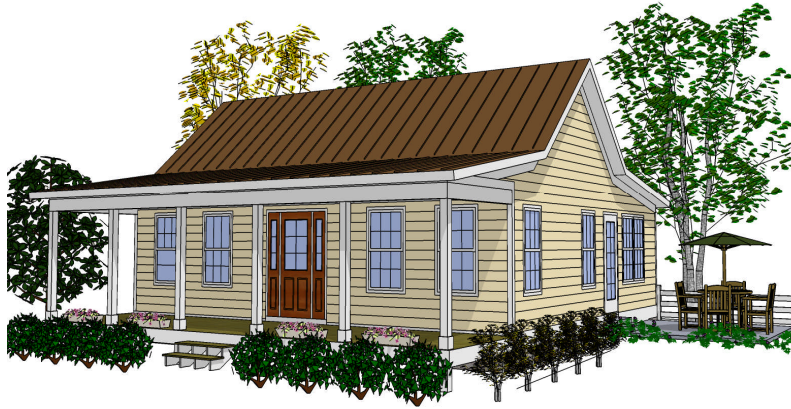


# The Orchard House



## Home Size

Main Level	1058	sqft
Porch and Patio	436	sqft
Total	1494	sqft

## High Performance Features

### Energy Efficiency

- Structural Insulated Panels
- Wall System R-19
- Roof System R-35
- Superior Walls Foundation System
- Inclusive Thermal Envelope
- Tankless Hot Water Heater

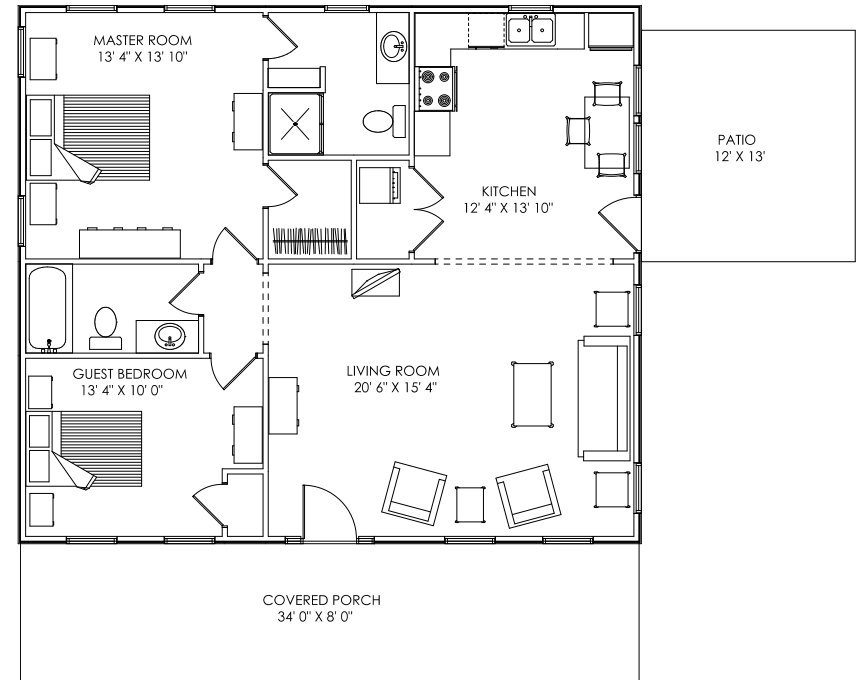
### Indoor Air Quality

- Low-VOC Paints and Finishes
- Energy Recovery Ventilator/Dehumidifier

### Sustainability

- Engineered Siding & Exterior Trim
- with 25 year finish warranty
- Aluminum Clad Windows and Doors
- Standing Seam Metal Roof
- Composite Decking
- Solid Surface Countertops

*Energy Star, EarthCraft and LEED for Homes certifications are available.*



## ONE FLOOR LIVING



**Macfarlane Homes, Inc**  
**CoolGreenSpaces.com**