

The Cow Palace



Home Size

Main Level	1058	sqft
Loft	148	sqft
Deck and Porch	660	sqft
Total	1866	sqft

High Performance Features

Energy Efficiency

- Structural Insulated Panels
- Wall System R-19
- Roof System R-35
- Superior Walls Foundation System
- Inclusive Thermal Envelope
- Tankless Hot Water Heater

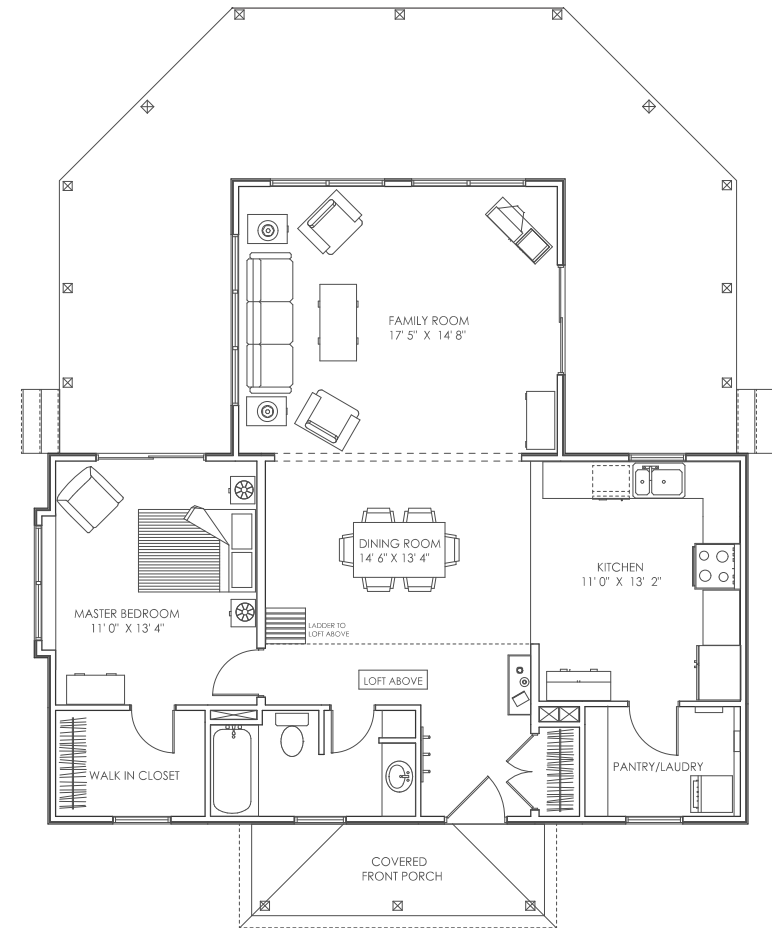
Indoor Air Quality

- Low-VOC Paints and Finishes
- Energy Recovery Ventilator/Dehumidifier

Sustainability

- Engineered Siding & Exterior Trim
with 25 year finish warranty
- Aluminum Clad Windows and Doors
- Standing Seam Metal Roof
- Composite Decking
- Solid Surface Countertops

Energy Star, EarthCraft and LEED for Homes certifications are available.



ONE FLOOR LIVING