

The Angler's Retreat



Home Size

First Floor	1158	sqft
Second Floor	502	sqft
Covered Porches	188	sqft
Total	1848	sqft

High Performance Features

Energy Efficiency

- Structural Insulated Panels
- Wall System R-19
- Roof System R-35
- Superior Walls Foundation System
- Inclusive Thermal Envelope
- Tankless Hot Water Heater

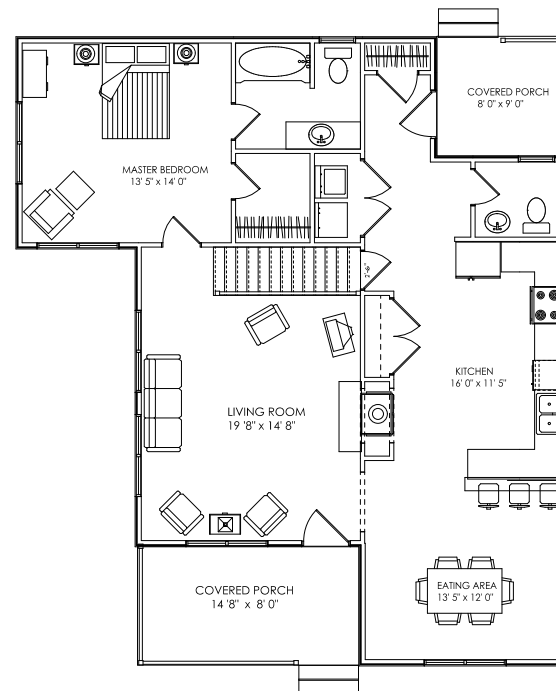
Indoor Air Quality

- Low-VOC Paints and Finishes
- Energy Recovery Ventilator/Dehumidifier

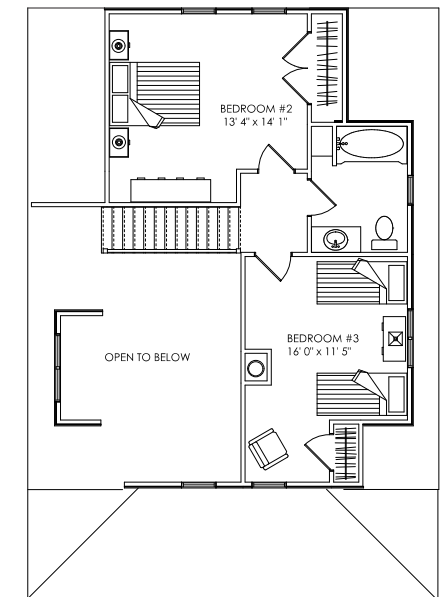
Sustainability

- Engineered Siding & Exterior Trim
with 25 year finish warranty
- Aluminum Clad Windows and Doors
- Standing Seam Metal Roof
- Composite Decking
- Solid Surface Countertops

Energy Star, EarthCraft and LEED for Homes certifications are available.



FIRST FLOOR PLAN



SECOND FLOOR PLAN